



## ACHIEVEMENTS IN 2017

### PARTNERSHIPS

Launched Strategic  
Directions 2017-21

VISION	
Healthy and vibrant communities	
PRINCIPLES	
1. <b>Health and Wellbeing</b>	2. <b>Equity and Inclusion</b>
3. <b>Partnership</b>	4. <b>Transparency and Accountability</b>
PILLARS FOR ACTION	
1. <b>Health and Wellbeing</b>	2. <b>Equity and Inclusion</b>
3. <b>Partnership</b>	4. <b>Transparency and Accountability</b>

- ➔ Environmental scan
- ➔ Partnership consultation
- ➔ Survey and interviews



2013-17 Strategic  
Achievements video

**3**

New members



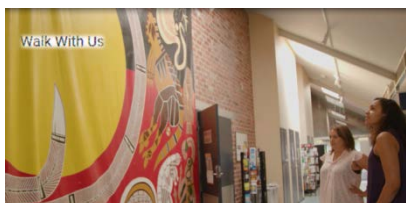
**CAMPBELL  
PAGE**



Increase in staffing

### ABORIGINAL HEALTH

Walk with Us DVD



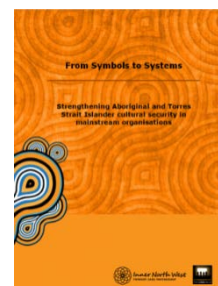
Supported Wellbeing Partnership

Working in Two Worlds forum  
attended by

**60**

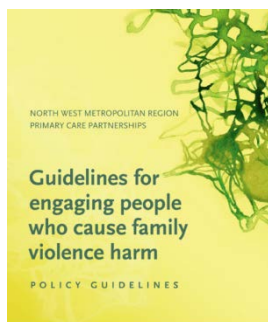
Aboriginal and Torres Strait  
Islander mainstream workers

From Symbols to Systems framework  
and launch



### FAMILY VIOLENCE

Launched Guidelines for engaging  
people who cause family violence  
harm



Delivered

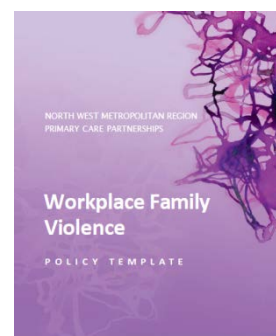
**11**

Training sessions and 2 HR  
Professionals workshops.

Trained

**215**

Managers & HR Professionals



Workplace Family Violence  
Policy launch

## PREVENTION

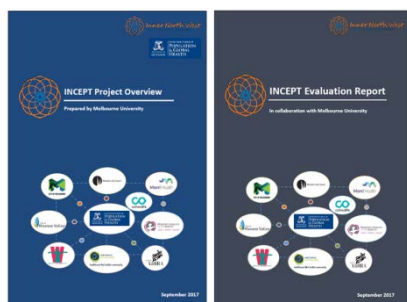
3

Planning Workshops

- Social Inclusion selected as the second priority area along with PVAW
- Mapping of prevention priorities across organisation
- Draft action plan developed
- Mapping of catchment-wide social inclusion activity



## INCEPT



- Evaluation of the INCEPT pilot project and development of the [INCEPT Evaluation Report](#) and [INCEPT project overview](#)
- New platform identified with potential to consolidate collective measurement in PVAW work
- **INCEPT 2.0 drafted and new resource is coming soon!**

**\$100,000**

Community Partnerships for Primary Prevention grant funding awarded

Project underway co-designing an evaluation resource with various settings and community groups



## ACCESS AND EQUITY



Establishment of an Access and Equity Alliance to drive and monitor INW PCP access and equity focused activity

## HEALTH LITERACY

3

Partner agencies engaged in pilot of the Organisational Health Literacy Responsiveness Tool (Org-HLR)

Framework published in BMC Health Services Journal [Link](#)

Continued partnership with Deakin University



INW PCP co-authored a journal article which has been submitted outlining the process of the pilot of the Org-HLR Tool

INW PCP contributed to a book chapter (International Handbook on Health literacy) focusing on policy in Australia

Commenced cross-regional health literacy initiative in collaboration with HealthWest Partnership



Supported the development of The Vic PCP Online [Health Literacy Course](#), as part of a state wide funded project

## CONSUMER DIRECTED CARE



Co-auspice for the Western Melbourne Cross-Sector Community of Practice, supporting participants to navigate multiple sector reforms and deliver sustainable, truly consumer-directed supports

The Western Melbourne Cross-Sector Community of Practice Network held

**3**

forums in 2017

**93**

people attended from different sectors to collaborate and exchange good practice to achieve better consumer-directed care outcomes [Link](#)

## INTEGRATED CHRONIC DISEASE MANAGEMENT AND SERVICE COORDINATION

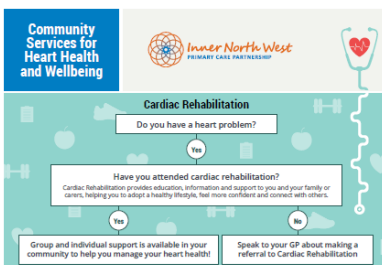
**3**

Western Self-Management Network Forums, exploring the theme of Mental Health

Self-Management Network  
of western and inner north west Melbourne

**120 +**

registrations



- Supported the transition of auspice of the Western Self-Management Network
- Supported the collaborative development of a localised heart health and wellbeing pathway to inform consumers of available services and supports following a cardiac event
- Facilitated the transition of long standing Diabetes Services Review Network (established 2011) to an independent inter-agency led network

## CONTRIBUTION TO OTHER PARTNERSHIPS

- Building Respectful Community Partnership
- Preventing Violence Together
- Mental Health Alliances - Inner West and Yarra
- Central City Community Health Senior Leadership Forum
- Western Integrated Family Violence Committee

