



ACHIEVEMENTS IN 2017

PARTNERSHIPS

Launched Strategic Directions 2017-21 [Link](#)

VISION		PURPOSE	
Healthy and equitable communities		Strong partnerships, improved care and services	
STRATEGIC DIRECTIONS			
1. Health and Wellbeing	2. Equity and Access	3. Partnership and Collaboration	4. Quality and Safety
5. Workforce and Skills	6. Digital Health	7. Research and Innovation	8. Governance and Leadership
PILLARS FOR ACTION			
1. Community Engagement	2. Workforce Development	3. Digital Transformation	4. Quality Improvement
5. Research and Innovation	6. Governance and Leadership	7. Partnership and Collaboration	8. Equity and Access

- ➔ Environmental scan
- ➔ Partnership consultation
- ➔ Survey and interviews



2013-17 Strategic Achievements video [Link](#)

3

New members



CAMPBELL PAGE

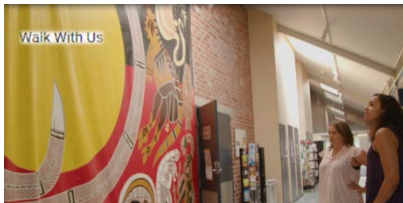


Increase in staffing

ABORIGINAL HEALTH

[Link](#)

Walk with Us DVD [Link](#)



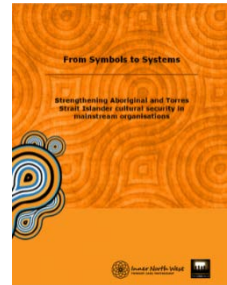
Supported Wellbeing Partnership

Working in Two Worlds forum attended by

60

Aboriginal and Torres Strait Islander mainstream workers

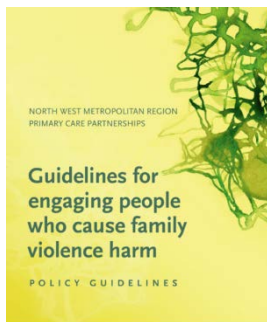
From Symbols to Systems framework and launch [Link](#)



FAMILY VIOLENCE

[Link](#)

Launched Guidelines for engaging people who cause family violence harm [Link](#)



Delivered

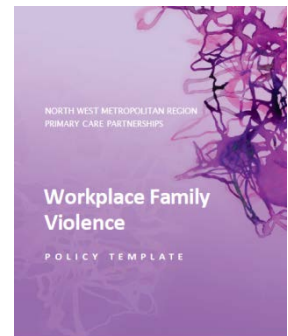
11

Training sessions and 2 HR Professionals workshops.

Trained

215

Managers & HR Professionals



Workplace Family Violence Policy launch [Link](#)

PREVENTION

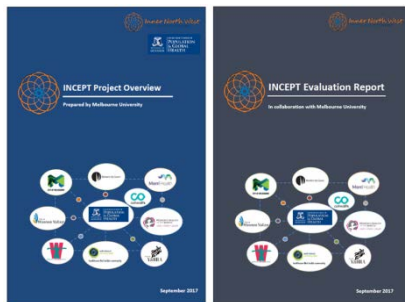
3

Planning Workshops

- Social Inclusion selected as the second priority area along with PVAW
- Mapping of prevention priorities across organisation
- Draft action plan developed
- Mapping of catchment-wide social inclusion activity



INCEPT



- Evaluation of the INCEPT pilot project and development of the [INCEPT Evaluation Report](#) and [INCEPT project overview](#)
- New platform identified with potential to consolidate collective measurement in PVAW work
- **INCEPT 2.0 drafted and new resource is coming soon!**

\$100,000

Community Partnerships for Primary Prevention grant funding awarded

Project underway co-designing an evaluation resource with various settings and community groups



ACCESS AND EQUITY



Establishment of an Access and Equity Alliance to drive and monitor INW PCP access and equity focused activity

HEALTH LITERACY

3

Partner agencies engaged in pilot of the Organisational Health Literacy Responsiveness Tool (Org-HLR)

Framework published in BMC Health Services Journal [Link](#)

Continued partnership with Deakin University



INW PCP co-authored a journal article which has been submitted outlining the process of the pilot of the Org-HLR Tool

INW PCP contributed to a book chapter (International Handbook on Health literacy) focusing on policy in Australia

Commenced cross-regional health literacy initiative in collaboration with HealthWest Partnership



Supported the development of The Vic PCP Online [Health Literacy Course](#), as part of a state wide funded project

CONSUMER DIRECTED CARE

consumer
directed
care

Western Melbourne
Cross-Sector
Community of Practice

Co-aspice for the Western Melbourne Cross-Sector Community of Practice, supporting participants to navigate multiple sector reforms and deliver sustainable, truly consumer-directed supports

The Western Melbourne Cross-Sector Community of Practice Network held

3

forums in 2017

93

people attended from different sectors to collaborate and exchange good practice to achieve better consumer-directed care outcomes [Link](#)

INTEGRATED CHRONIC DISEASE MANAGEMENT AND SERVICE COORDINATION

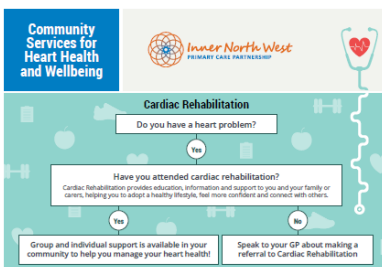
3

Western Self-Management Network Forums,
exploring the theme of Mental Health

Self-Management Network
of western and inner north west Melbourne

120 +

registrations



- Supported the transition of auspice of the Western Self-Management Network
- Supported the collaborative development of a localised heart health and wellbeing pathway to inform consumers of available services and supports following a cardiac event
- Facilitated the transition of long standing Diabetes Services Review Network (established 2011) to an independent inter-agency led network

CONTRIBUTION TO OTHER PARTNERSHIPS

- Building Respectful Community Partnership
- Preventing Violence Together
- Mental Health Alliances - Inner West and Yarra
- Central City Community Health Senior Leadership Forum
- Western Integrated Family Violence Committee

